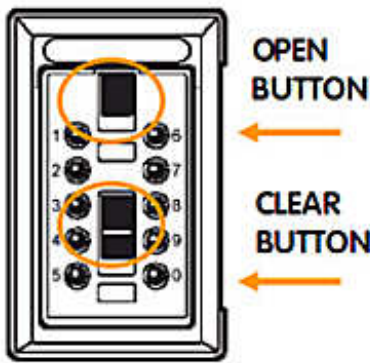


Keysafe Code Setting Instructions

Please read the Keysafe code setting instructions below and test the Keysafe combination before placing the lid on the Keysafe. The Keysafe Lid will not work if the combination is set incorrectly. For greater security, please change the combination periodically.

I. Selecting Your Combination



Look at the front of the Keysafe. You will see buttons numbered 1 through 0. You will also see an **OPEN** button and a **CLEAR** Button. There is no preset combination on your Keysafe. You will select your own combination. Select a combination between four and seven numbers in your combination. **Each number can only be used one time.** Do not use number combinations that can be easily guessed such as your phone number, vehicle license plate or street address. Select a combination and safely record it.

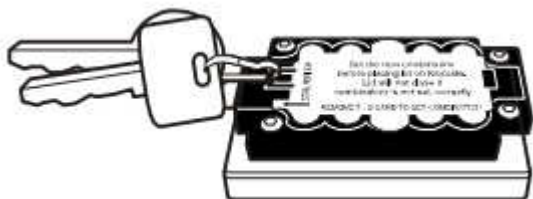
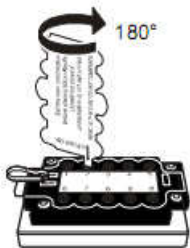
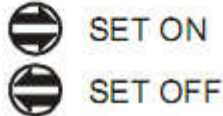
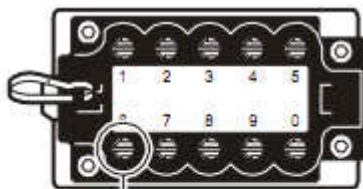
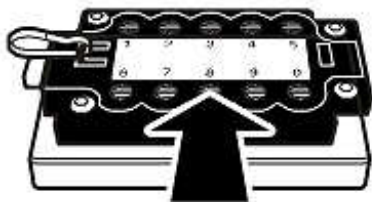
II. Setting Your Combination



WARNING!

Improperly setting the combination is not covered under the GE Security Keysafe Warranty.

Press down on the **CLEAR** button. Then press down on the **OPEN** button and pull out on the lid.



Remove the plastic card from the back of the lid by lifting from the center of the edges. You will see ten numbered gray buttons with arrows.

These numbers correspond to the numbered buttons on the front of the lid.

There is no preset combination so all the arrows on the screws point to the **OFF** position. Arrows pointing to the **OFF** position are not part of combination.

Use the screwdriver tip on the plastic card or a small screwdriver to push and rotate the arrows.

For each number in your combination, apply light pressure and rotate a 180 degree turn so that the arrow points to the **ON** position and snaps up.

Arrows rotated a 180 degree turn to the **ON** position are part of your combination.

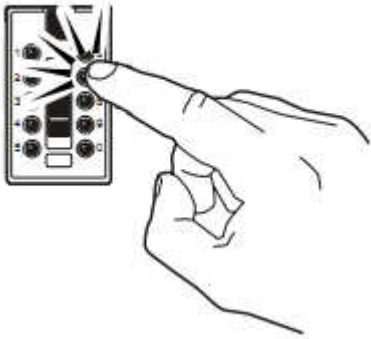
CAUTION: Check to make sure that all buttons have snapped back up and are all pointing to the **ON** or **OFF** position. Arrows must point either to the **ON** or **OFF** position or the Keysafe may be damaged.

If any arrow is pointing sideways or has not snapped up, the combination will not work. Test the combination before putting the lid on the box.

Replace the plastic card on the back of the lid.

Attach keys to the key clip.

III. Testing your combination



On the front of the lid, push in the numbered buttons that are in your combination. You will notice each button will **CLICK** as it is pressed.

Press down on the **OPEN** button.

If the combination is set correctly, the **OPEN** button will slide down fully. If the combination was set incorrectly, the **OPEN** button will not slide down.

If set incorrectly, **DO NOT RETURN THE LID TO THE KEYSAFE.**

Press the **CLEAR** button and refer to **Section II.**

Keysafe Product Links:

- [Slimline Keysafe – Item:001004](#)
- [Portable Keysafe – Item:001000](#)
- [Permanent Keysafe – Item:001001](#)
- [S7 BigBox Keysafe – Item:001267](#)
- [Auto Keysafe Portable – Item:001309](#)
- [Auto Keysafe Large Portable – Item:001266](#)
- [Auto Keysafe Permanent – Item:001312](#)
- [Door Mount Keysafe – Item:001017](#)
- [Digital Keysafe – Item:001847](#)
- [Designer Keysafe – Item:001846](#)
- [Keysafe Rubber Covers](#)

Keysafe Instructions:

[Code Setting Instructions](#)

Keysafe Videos:

[GE Security Keysafe Promo Videos](#)
[Keysafe Video Instructions](#)



Davstar Security <http://davstar.com/>

<http://davstar.com/keysafe-code-setting-instructions.htm>